

FG 620

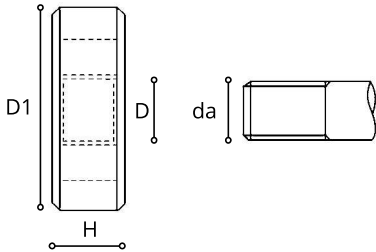


FGX 622
INOX



FG620

FGX622



D	da	D1	H	CODE	HSS 5620..... €	HSS-E 5622..... €
G 1/8 - 28	9,58	30	1100108	37,48	45,14
G 1/4 - 19	13,01	38	1000104	37,48	56,24
G 3/8 - 19	16,51	45	1400308	62,15	89,63
G 1/2 - 14	20,80	45	1400102	61,53	89,63
G 5/8 - 14	22,77	55	1600508	75,70	
G 3/4 - 14	26,26	55	1600304	110,12	141,85
G 7/8 - 14	30,02	65	1800708	111,18	
G 1" - 11	33,07	65	1800100	115,15	207,57
G 1" 1/8 - 11	37,72	75	2001108	163,43	
G 1" 1/4 - 11	41,73	75	2010104	163,43	
G 1" 3/8 - 11	44,14	90	2201308	203,34	
G 1" 1/2 - 11	47,62	90	2201102	208,51	
G 1" 3/4 - 11	53,57	105	2201304	235,31	
G 2" - 11	59,43	105	2200200	320,45	